

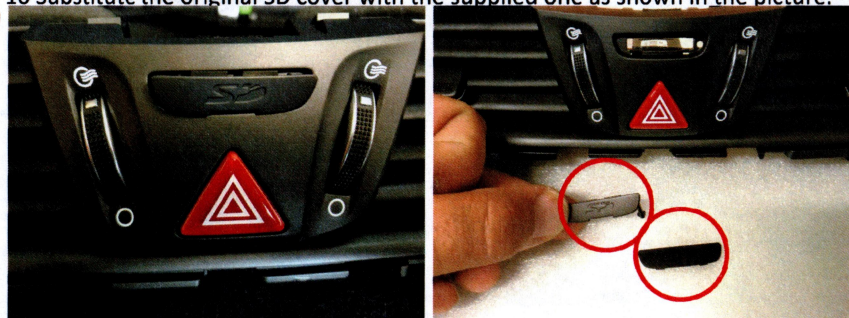
9



9 Connect all the cables, check the correct operation and put back in place all parts in their position. In the picture it is shown the final result.

10

10 Substitute the original SD cover with the supplied one as shown in the picture.



Facia plate installation kit for:

# HYUNDAI

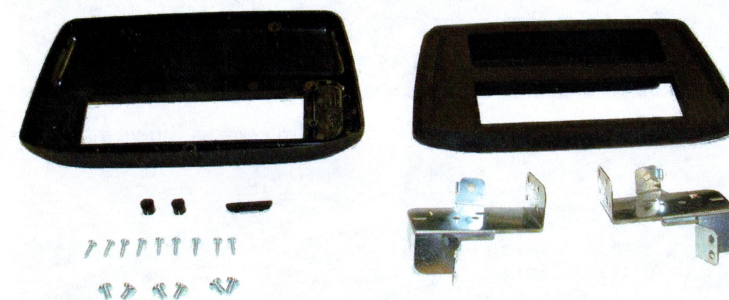
Model: i30

Year: 2017>

Kit content: single DIN facia plate  
mounting brackets + screws

Compatibility: Compatible with single DIN facia device

Customer code:

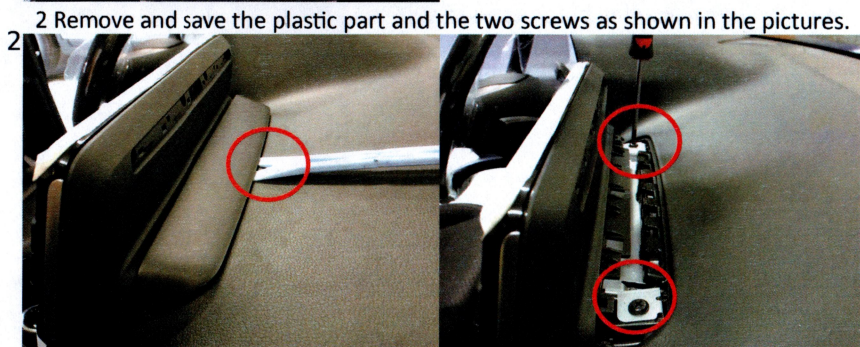


## INSTALLATION MANUAL

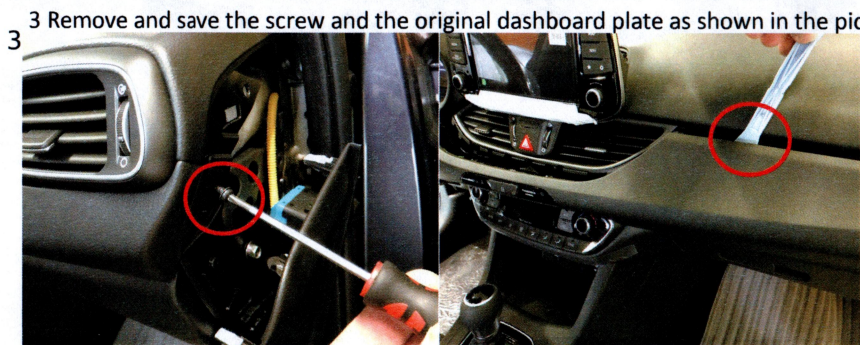
All installation work must be performed by a qualified professional installer only.  
The manufacturer / dealer is not liable for any kind of incidental or indirect damages.



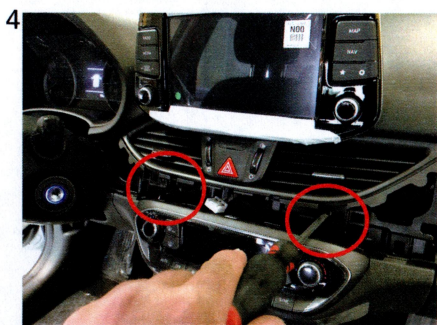
1 This is the original configuration.



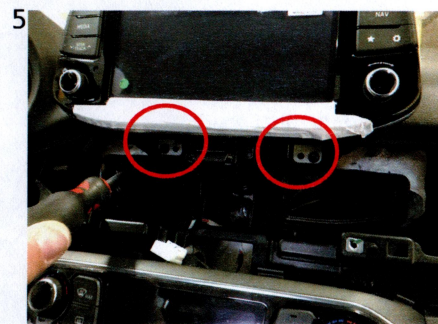
2 Remove and save the plastic part and the two screws as shown in the pictures.



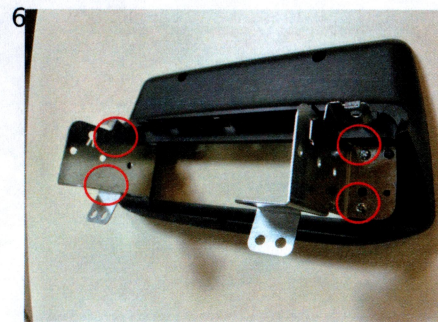
3 Remove and save the screw and the original dashboard plate as shown in the pictures.



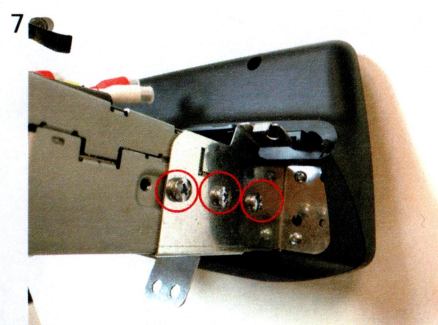
4 Remove and save the two screws and the air vents as shown in the pictures.



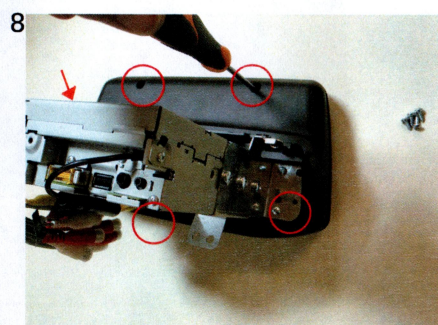
5 Remove and save the two screws and the original radio unit from their position.



6 Fix the supplied brackets with the 2 screws per side as shown in the picture.



7 Insert the new radio unit as shown in the picture and fix it with 3 screws per side.



8 Fix the rear plastic shell shown in the picture to the front fascia plate with five screws as shown in the picture. Please remember to use the two supplied rubber caps to cover the two screws on top of the fascia plate.