

CT23PE08

Peugeot 206

Stereo Hood and Hazard Relocation Housing

Package Contents:

- 1 x Hood Back
- 1 x Hood Front
- 1 x Trim
- 2 x Stereo Side Brackets
- 6 x M5x8 allen head screws
- 2 x #6 self tapping screws
- 1 x Hazard relocation panel front
- 1 x Hazard relocation panel back

Removal of original car equipment & panels.

Remove the display hood by levering towards the rear, then lift away. Note hazard and display wiring must be disconnected before pulling hood completely away.



Remove screws holding display and remove display. Disconnect wiring and push wiring out the way.



Cut plastic along red lines following the shape of the plastic sides, be careful not to cut any wires. After cutting the plastic can be removed by a gentle side to side twist to break the melted plastic joint.

This plastic is no longer required.

All of the wiring shown in front of the display bracket in these pictures is not there in the car until after the new stereo wiring is installed.



Unscrew top fascia screws and remove fascia

After removing screws fascia can be pulled away gently



Centre Console Rear section removal

Unclip cap to reveal the screw holding this part (either T20 torx or crosshead screw, we have seen both)

Unscrew and remove part by lifting



Remove the ashtray by opening and pulling upwards



Remove the gear-stick cover



Remove the ashtray lighting wire by pushing downwards



Remove Centre console front trim cover and screws these screws will be used to hold the new 2Din Stereo brackets at their rear mount point.



Remove window control switch panel to reveal a 10mm nut holding the centre console in place. Carefully remove the nut.



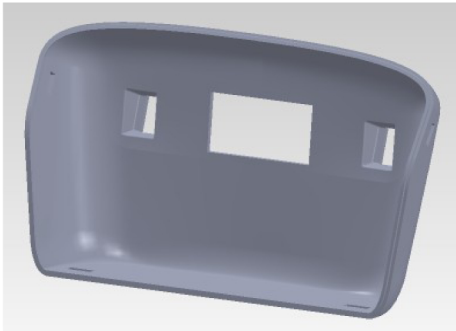
Unwrap hazard switch wiring to leave enough to allow the wire to reach the ashtray.

Using the aperture when the window switch was, pull the centre console towards the rear of the car to give a little space at the front. This will make it easier to feed the hazard switch wires.



Once hazard wiring is through the gap, the centre console, ashtray light and window switch can be refitted in reverse of removal. The front screws will not be refitted. Do not fit the ashtray at this stage.

Feed the hazard switch wires through the new relocation back panel. Install the hazard relocation back panel by using the two NO6 self tapping screws from the package.



Feed the hazard wires through the relocation front panel.

Clip the hazard relocation front to the back panel by the bottom first, then push the top until a click is heard.

Connect the hazard warning switch and push into place.



Now the entire hazard switch relocation is finished we move to fitting the 2Din stereo

Fix side brackets to stereo as shown using the m5 screws from the pack (3 in each side). Alignment is made by aligning the top edge of the bracket with the top of the stereo, this will show the correct screw holes to use.



Connect all cables to the back of the stereo prior to installing in car as they are awkward to get to afterwards. Using the screws previously removed from the dash re fit them over the new brackets (front holes).

The rear holes use the screws previously removed from the centre console front fixing (where the hazard relocation is now installed). Using the holes in the brackets drill a small pilot hole through the dash to accept the screws



Remove the metal spring clips from the original display hood. Place them onto the new 2DIN hood.



Locate the hood front clips into the stereo side brackets. Once the clips are in place, push down to clip the hood into place.



The front part of the hood has a trim which may or may not be needed depending on the stereo choice. Fitting the trim is just a case of pushing it onto the lip of the front panel taking note there is a rounded corner and a square corner



The hood front is simply clipped into place on the front of the hood back. Installation is now complete.

